



CITY OF MARSHALL

Work Session

A g e n d a

Tuesday, May 11, 2021 at 4:00 PM

**Minnesota Emergency Response and Industrial
Training (MERIT) Center, 1001 Erie Road**

NOTICE: Pursuant to Minnesota State Statute 13D.021

Some or all members of the City Council may participate by telephone or other electronic means. Regular attendance and meeting location are not feasible due to the Coronavirus Disease (COVID-19) pandemic.

CALL TO ORDER

NEW BUSINESS

1. College Drive/Highway 19 Reconstruction Project Update.

ADJOURNMENT

Disclaimer: These agendas have been prepared to provide information regarding an upcoming meeting of the Common Council of the City of Marshall. This document does not claim to be complete and is subject to change.



CITY OF MARSHALL AGENDA ITEM REPORT

Meeting Date:	Tuesday, May 11, 2021
Category:	NEW BUSINESS
Type:	INFO
Subject:	College Drive/Highway 19 Reconstruction Project Update.
Background Information:	<p>MnDOT representatives will be available and will also have the layout available to share for any discussion.</p> <p>Attached please find the materials for the upcoming work session.</p> <ol style="list-style-type: none">1. Timeline of event from 2019 through construction, a little history, what has been happening since we last meet, and some action items moving forward.2. A draft cost estimate of the project as of to date for both MnDOT and City costs. This is a layout cost estimate as we move into final design this will be more refined.3. Cost participation showing the location of the cost breakdown currently.4. Streetscaping concept layout.
Fiscal Impact:	A draft cost estimate of the project to date is attached.
Alternative/ Variations:	No alternative actions recommended.
Recommendation:	Information only. City staff looking for Council input or feedback.



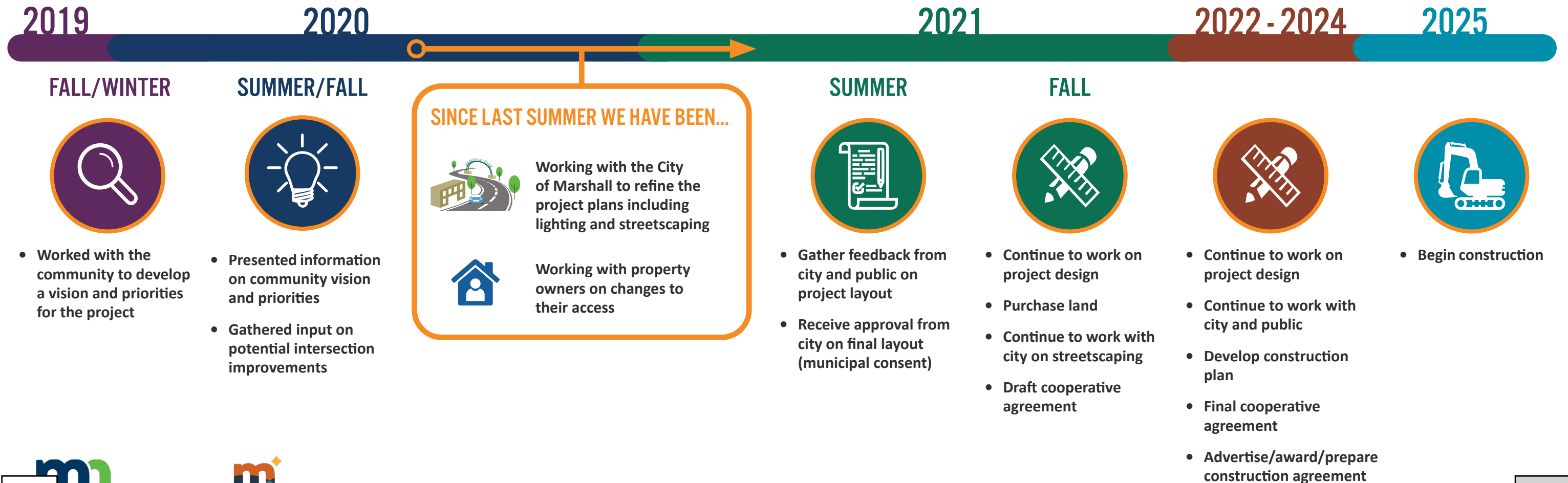
College Drive/Hwy 19 Reconstruction Project

WHAT ARE WE DOING ON COLLEGE DR/HWY 19?

MnDOT is planning to reconstruct College Drive/Hwy 19 from 4th Street to Bruce Street in 2025.

LEARN MORE

To learn more about what we heard from the community and sign up to receive project emails visit: www.mndot.gov/d8/projects/hwy19marshall



Construction Cost Estimate

MARSHALL -TH 19 TOTAL PROJECT COSTS					MNDOT TOTALS		CITY TOTALS		
Item Description	Units	Unit Cost	Quantity	Total	Quantity	Total	Quantity	Total	
<u>PAVING AND GRADING (P & G) COSTS</u>									
Bituminous Pavement (1)	ton	\$100.00	0	\$ -	166	\$ 16,600	0	\$ -	see Note 1
4" Concrete (Walk, Median)	sq ft	\$8.50	101,446	\$ 862,291	97,410	\$ 827,985	4,036	\$ 34,306	
4" Colored concrete (Walk, Median) (5)	sq ft	\$17.00	4,800	\$ 81,600	2,400	\$ 40,800	2,400	\$ 40,800	See Note 5
8" Concrete pavement (Truck Apron, Driveway)	sq yd	\$67.50	2,633	\$ 177,716	2,633	\$ 177,716	0	\$ -	
Concrete pavement (1)	cu yd	\$67.50	37,362	\$ 2,521,932	35,902	\$ 2,423,380	1,460	\$ 98,552	See Note 1
Supplemental Reinf Bars	pound	\$4.00	50,000	\$ 200,000	45,000	\$ 180,000	5,000	\$ 20,000	
Class 6 Aggregate Base (1)	cu yd	\$35.00	8,760	\$ 306,610	8,425	\$ 294,872	335	\$ 11,739	See Note 1
Subgrade Excavation (1)	cu yd	\$10.00	42,645	\$ 426,449	40,988	\$ 409,880	1,657	\$ 16,569	See Note 1
Common Excavation	cu yd	\$10.00	15,554	\$ 155,535	14,986	\$ 149,857	568	\$ 5,678	
Common Borrow	cu yd	\$4.00	77,768	\$ 311,071	74,929	\$ 299,715	2,839	\$ 11,356	
Select Granular Borrow	cu yd	\$25.00	42,645	\$ 1,066,121	40,988	\$ 1,024,700	1,657	\$ 41,422	
Contaminated Materials Hauling	cu yd	\$55.00	1,000	\$ 55,000	200	\$ 11,000	800	\$ 44,000	See Note 6
Bridge Approach Panels	sq yd	\$250.00	155	\$ 38,750	155	\$ 38,750	0	\$ -	
Curb and Gutter Design B424	lin ft	\$30.00	364	\$ 10,932	364	\$ 10,932	0	\$ -	
Curb and Gutter Design B624	lin ft	\$35.00	17,218	\$ 602,630	16,341	\$ 571,939	877	\$ 30,692	
(a) Subtotal Paving and Grading				\$ 6,816,638	\$ 6,461,526		\$ 355,112		
					95%		5%		
<u>UTILITIES, REMOVALS, DRAINAGE, ETC.</u>									
Removals/Clear and Grub		5.0%		\$ 338,082		\$ 320,470		\$ 17,612	
Signal removal (Lyon)	each		1	\$ 15,000	0.5	\$ 7,500	0.5	\$ 7,500	
City Utilities (sanitary)	lump		1	\$ 374,500		\$ -	1	\$ 374,500	
City Utilities (Watermain)	lump		1	\$ 353,900			1	\$ 353,900	
Signing, Striping, Traffic Control		5.0%		\$ 338,082		\$ 320,470		\$ 17,612	
Dewatering		10.0%		\$ 676,164	30%	\$ 202,849	70%	\$ 473,315	
Erosion Control and Turf Establishment		3.0%		\$ 202,849		\$ 192,282		\$ 10,567	
(b) Subtotal Utilities, Removals, Drainage, Etc.				\$ 2,298,577	\$ 1,043,570		\$ 1,255,007		
<u>DRAINAGE</u>									
Storm Sewer				\$ 1,511,000		\$ 1,150,000		\$ 361,000	See Note 7
(c) Subtotal Drainage				\$ 1,511,000	\$ 1,150,000		\$ 361,000		
<u>STRUCTURES/SIGNALS/MISC. COST</u>									
Roadway Lighting (MnDOT) (2)	each	\$7,000	12.0	\$ 84,000	8.0	\$ 56,000	4.0	\$ 28,000	See Note 2
Roadway Lighting (3)	each	\$3,100	17.0	\$ 52,700		\$ -	17.0	\$ 52,700	See Note 3
Decorative Lighting (Single Assembly) (4)	each	\$4,000	17.0	\$ 68,000		\$ -	17.0	\$ 68,000	See Note 4
Decorative Lighting (Double Assembly) (4)	each	\$6,400	22.0	\$ 140,800		\$ -	22.0	\$ 140,800	See Note 4
Decorative Lighting (intersection lighting) (4)	each	\$1,600	8.0	\$ 12,800		\$ -	8.0	\$ 12,800	See Note 4
Rectangular Rapid Flashing Beacon (RRFB) (Lyon)	each	\$78,000	1.0	\$ 78,000		\$ -	1.0	\$ 78,000	
Signal System A (Saratoga)	each	\$250,000	1.0	\$ 250,000	0.5	\$ 125,000	0.5	\$ 125,000	
Signal System B (Main)	each	\$ 250,000	1.0	\$ 250,000	1.00	\$ 250,000	0.00	\$ -	
Recycle/waste receptacles	each	\$ 1,200	8.00	\$ 9,600		\$ -	8.00	\$ 9,600	
Bike loops (with city logo)	each	\$ 1,400	8.00	\$ 11,200			8.00	\$ 11,200	
Metal street bench	each	\$ 1,200	12.00	\$ 14,400			12.00	\$ 14,400	
(d) Subtotal Misc				\$ 971,500	\$ 431,000		\$ 540,500		
(a+b+c+d) Subtotal Construction				\$ 11,597,714	\$ 9,086,096		\$ 2,511,619		
Roadway Risk & Contingency		10.0%		\$ 1,159,771		\$ 908,610		\$ 251,162	
Item 1. TMP		5.0%		\$ 579,886		\$ 454,305		\$ 125,581	
obilization		5.0%		\$ 579,886		\$ 454,305		\$ 125,581	
(e) Subtotal Miscellaneous				\$ 2,319,543	\$ 1,817,219		\$ 502,324		
(a+b+c+d+e) Total Construction				\$ 13,917,257	\$ 10,903,315		\$ 3,013,942		
Inflation Adjusted Construction Cost for 2025 (1.14 factor)				\$ 15,865,673	\$ 12,429,779		\$ 3,435,894		
Design & Construction Engineering		16.0%		\$ 2,226,761		\$ 1,744,530		\$ 482,231	
<u>RW Cost</u>									
				=		=		=	
Total RW				\$ -	\$ -		\$ -		
Total Estimated Cost				\$ 18,092,434	\$ 14,174,309		\$ 3,918,125		

Notes:

(1) Parking areas are included in the concrete pavement quantity, City will pay 10% of total parking area and MnDOT will pay 90%.

Assumed Pavement and Subcut Depths:

TH 19 driveway/ truck apron pavement	8 Concrete	Local Road pavement	5 bit
	6 Class 6		6 Class 6
	12 Subcut		12 Subcut
TH 19 concrete pavement	8 Concrete		
	6 Class 6		
	40 Subcut		
Walks and Medians	5 Concrete	* assumed equally split between 4" and 6"	
	6 Class 6		

(2) Country Club (4), Saratoga (4), Main St (4) - lights on local street City costs (4 for City and 8 for MnDOT)

(3) based on estimate from city in 10/6/2020 email

(4) based on estimate from city in 10/2/2020 email

(5) MnDOT to cover cost of regular concrete, City to cover cost of colored (2x the cost of regular)

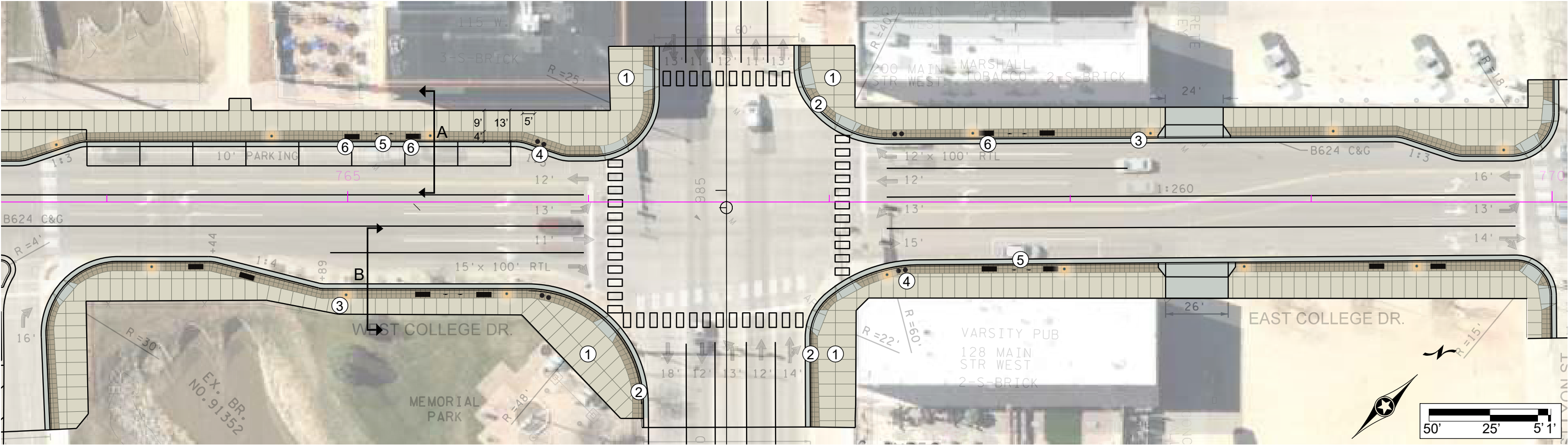
(6) Assumed 20% MnDOT cost and 80% City; quantity based on similar project amount

(7) Includes Block 11 costs under City costs - see storm summary for cost breakdown



- MnDOT Roadway
- MnDOT Sidewalk/Trail
- Shared Parking Cost (10% City Cost)
- City Approach Cost (Country Club Drive)
- City Approach Cost (2nd Street)

TH 19 Reconstruction in Marshall: Streetscape Concept



Streetscape Design Intent: Durable design, minimal to low maintenance; materials, colors and visual aesthetics complementary to Main Street TH 59 streetscape, but not a copy; cost appropriate; and limited street trees at appropriate locations (for example at Memorial Park).

- ① Pedestrian Access Route: Standard concrete, limited joints, size can fluctuate as needed against facades/doorways.
- ② Utility Zone: Colored concrete, 2'x2' squared scored panels to differentiate and visually reinforce the curb line, includes area for pedestrian scale light units, bike loops, recycle/waste receptacles, overhead street lighting units, signal cabinets, mental benches on concrete pads, moveable flower pots (per City practice), etc.
- ③ Pedestrian Scale Lighting
- ④ Recycle/ waste Receptacle
- ⑤ Bike Loop (parallel with curbline)
- ⑥ Metal Bench 6' Length

